



DRAM

DRAM

INDUSTRIAL PAINTING | FIRE PROOFING | ROPE ACCESS | ROOFING | POST FABRICATION | FLOORING





# ABOUT DRAM

- DRAM is a company in the steel & industrial coatings industry specializing in the corrosion protection of structural steel. It was established by Martin Gossayn in 1989 and remains a family business.
- DRAM is now run by Martin's son and daughter, Dean Gossayn and Alex Bolus, with guidance and oversight by his wife Renee. Martin has instilled in them the same love, passion and commitment to the business as he had.
- DRAM has become a household name for corrosion protection, coating in excess of 25 000 tons of steel a year. DRAM has been a constant contributor in the South African construction industry and to many of the infrastructure projects in and around South Africa. Some notable projects completed include the Gautrain Stations, King Shaka International Airport, Mall of Africa, Mercedes Benz Factory East London, Time Square Arena & Casino, Discovery Head Office, Sandton City and currently the large Ford Motor Company Development in Silverton.
- DRAM has a footprint throughout the African continent working in multiple African countries over the years.



# ABOUT DRAM

- 32 years experience
- Industry leaders in industrial painting and fire protection
- Size and safety issues are no challenge
- All deadlines can be met without issue
- Able to carry out applications in irregular & inaccessible heights & areas
- Approved & preferred applicator by premium manufacturers
- Full guarantees support & inspections available
- Full quality control pack available on completion of projects
- Ability to carry out work locally, nationally & internationally
- Ability to perform work on & off site
- Member of the Corrosion Institute of Southern Africa
- Member of the Southern African Institute Steel Construction





# OPERATIONAL STATS

- 39 Active Service Vehicles
- 1 Boom Lift
- 1 Scissor Lift
- 25 Airless Spray Machines
- Multiple Generators
- Multiple Testing Tools & Machines
- Numerous Small Tools & Plant
- 25-35 Active Contracts per day
- Contract Size Range: 10 Tons – 2 500 Tons
- Nation Wide Reach
- +- 25 000 TONS Coated / Year

- 250 Certified Painters
- 30 Trained Foreman
- 5 Experienced Contracts Managers
- 2 Qualified Safety Officers
- 1 Full Time Quantity Surveyor
- 10 Person Admin Department
- Experienced Top Level Management Team



# SERVICES

- On Site Corrosion Protection of Structural Steel
  - Application of coatings by traversing structures
- Post Fabrication Cleaning & Priming of Steel
  - Fits in to fabrication production line
- Fire Proofing
  - Fire Retardant Coating of Structural Steel
  - Penetration Sealing
- Floor Coatings
  - Light sealants
  - Heavy duty Epoxy coatings
  - Remedial repairs
- Roof Refurbishment
  - Light acrylic coatings
  - Heavy duty epoxy and polyurethane coatings
- Rope Access
  - Painting
  - Cleaning



# CONTACT DETAILS

- Dean Gossayn | CEO | 084 549 2895 | dean@dram.co.za
- Alex Bolus | CFO | 082 430 5934 | alex@dram.co.za
- Susan Van Heerden | General Manager | 011-660-7594 | admin@dram.co.za
- Stitch Economakis | Head Contracts Manager | 082 828 7355 | cm@dram.co.za
- Website | [www.dram.co.za](http://www.dram.co.za)



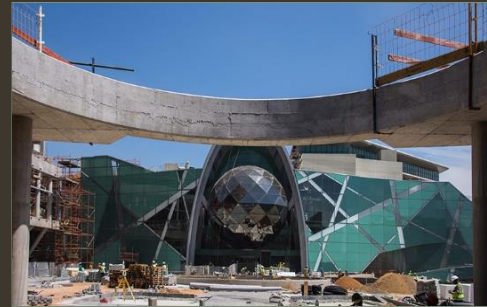


# GALLERY





# GALLERY





# GALLERY

